A black and white photograph of a person sitting on a wooden bench in a desolate, industrial-looking environment. The person is holding a newspaper over their head, which is on fire. Bright light streams in from two large rectangular openings in the background wall. The person is wearing a dark button-down shirt, trousers, and sneakers. The text "WE LOVE STORIES" is overlaid in the center of the image.

WE LOVE STORIES



A black and white artistic photograph. A woman's face is the central focus, framed by a delicate, sheer fabric that is gathered at the top and sides, creating a canopy-like effect. Her eyes are closed, and her expression is serene. Her hands, with dark nail polish, are gently resting on her cheeks. The lighting is soft, highlighting the textures of the fabric and the contours of her face. The overall mood is intimate and ethereal.

WE LOVE STORYTELLERS





**The Ranch Film Studios  
is located in the heart  
of Hollywood South, and  
serves storytellers across  
the nation.**

Just minutes from downtown  
New Orleans in St. Bernard  
Parish, The Ranch sits on 24 acres  
providing over 219,000 sq/ft of flex  
and stage space; 40,000 sq/ft of  
office space and parking for over  
1200 cars.

**Off Campus: 1615 Building**

- 20,000 sq/ft of premium office  
space over 4 floors and ground  
floor wardrobe space.

**Off Campus Warehouse Space**

- 80,000 sq/ft of warehouse.

# MAIN CAMPUS

The Ranch campus includes over 219,000 sq/ft of stage, flex and mill space, state of the art office space, base camp, front and rear lot parking and green space.

The Ranch main campus currently provides 20,000 sq/ft of premium office space over 3 floors. These offices include bullpens, two large board rooms, reception area, office furniture and state of the art phone system with high speed fiber-optic internet.

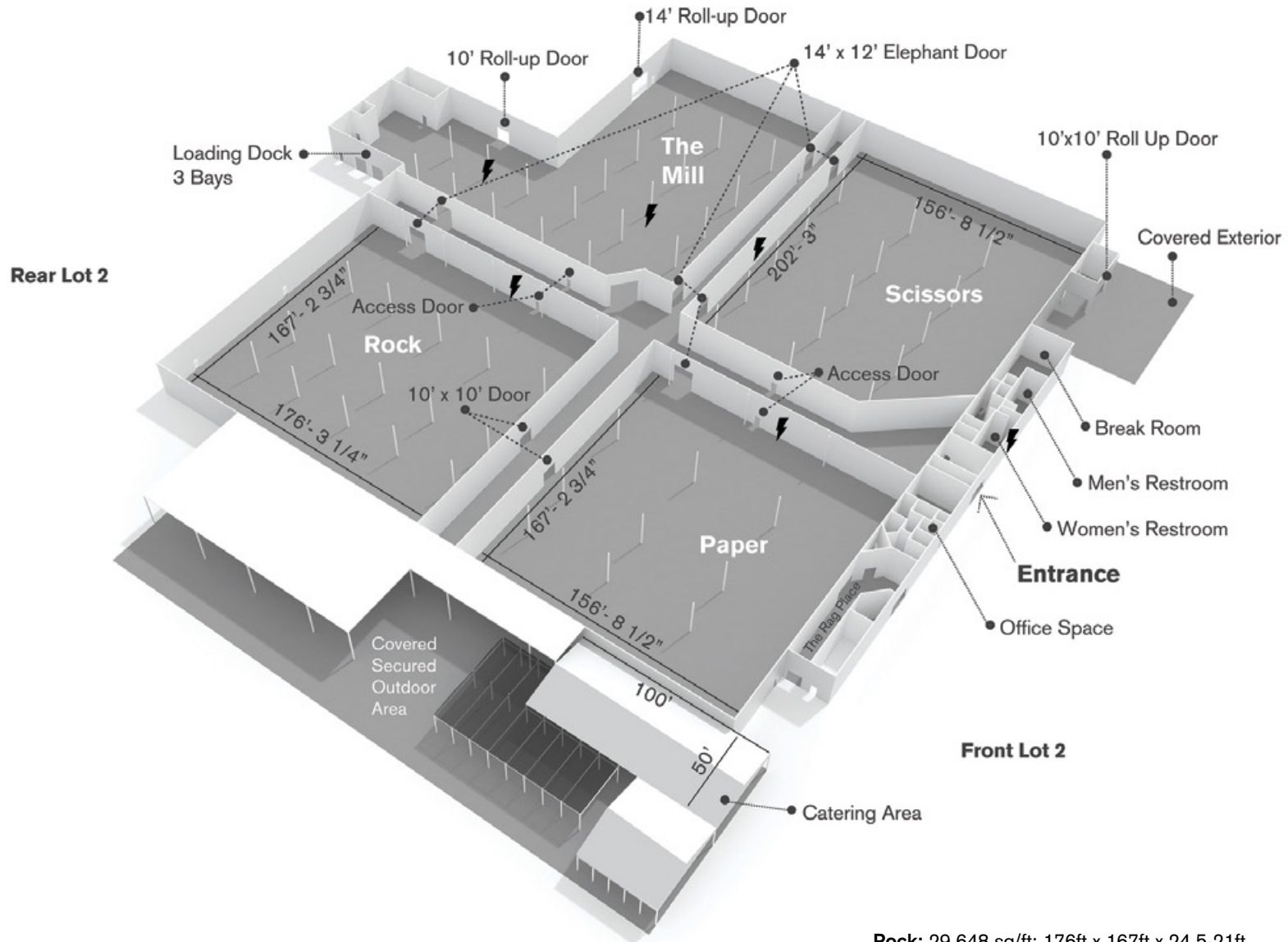




WE LOVE PROVIDING SPACES



# AMAZEMENT CENTER



Size: 157,612 sq/ft  
Dimensions: 396ft x 357ft  
Height: 29-21ft  
HVAC  
Load: 30psf

For dimensions of column layout visit [WeAreTheRanch.com](http://WeAreTheRanch.com)

### Additional Features:

Front Lot 2: 174,000 sq/ft

⚡ 200A / 3-phase @ 120/208 V. Total amps: 600

Rear Lot 2: 70,000 sq/ft

Loading Dock: 4,000 sq/ft

Covered Secured Area: 30,000 sq/ft

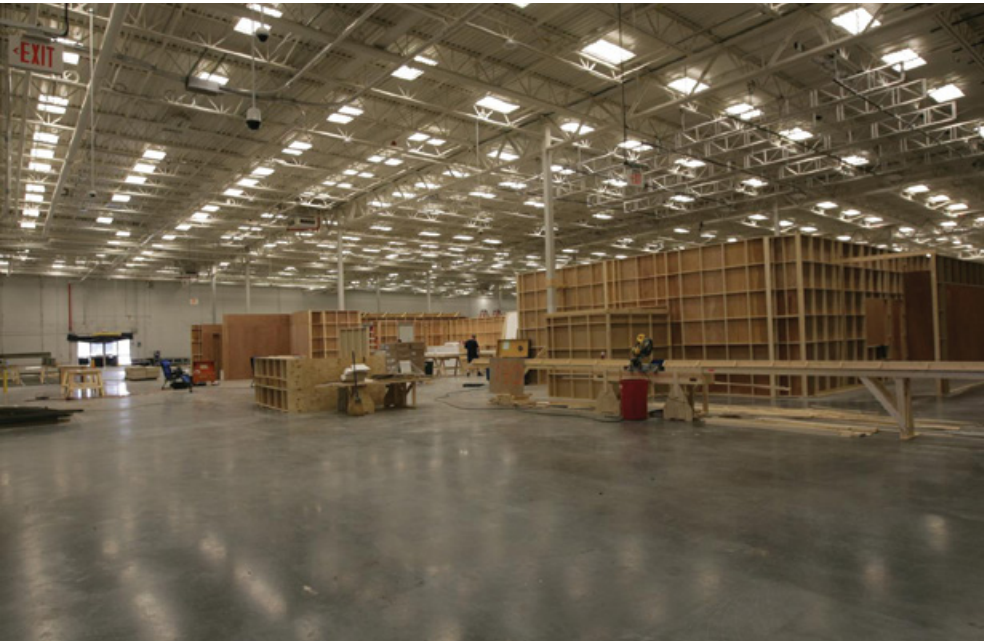
**Rock:** 29,648 sq/ft; 176ft x 167ft x 24.5-21ft  
**⚡ 2 x 400A / 3-phase @ 120/208 V. Total amps: 2400**

**Paper:** 26,094 sq/ft; 167ft x 156ft x 29-25ft  
**⚡ 3 x 400A / 3-phase @ 120/208 V. Total amps: 3600**

**Scissors:** 30,859 sq/ft; 202ft x 156ft x 29-25ft  
 ⚡ 2 x 400A / 3-phase @ 120/208 V. Total amps: 2400

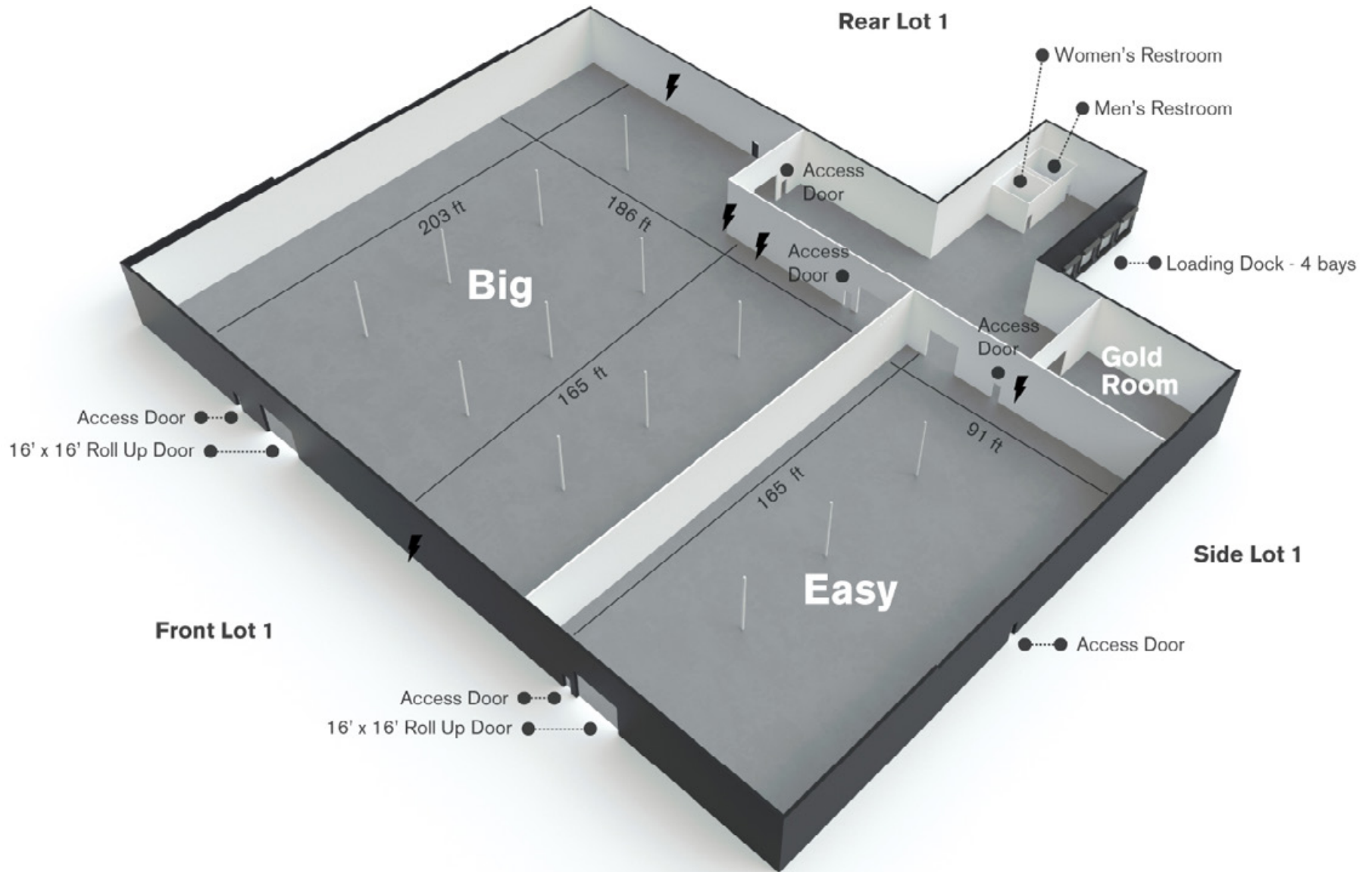
**The Mill:** 34,306 sq/ft; 24.5-21.5ft  
**⚡ 2 x 100A / 3-phase @ 480 V. Total amps: 600**

AMAZEMENT CENTER





# IMAGINATION STATION



Size: 62,360 sq/ft  
 Dimensions: 280ft x 205ft  
 Height: 25-21ft  
 Load: 30psf

For dimensions of  
 column layout visit  
[WeAreTheRanch.com](http://WeAreTheRanch.com)

## Additional Features:

Front Lot 1: 86,000 sq/ft  
 ⚡ 1 x 200A / 3-phase @ 120/208 V. Total amps: 600

Rear Lot 1: 24,000 sq/ft

Loading Dock: 2,500 sq/ft

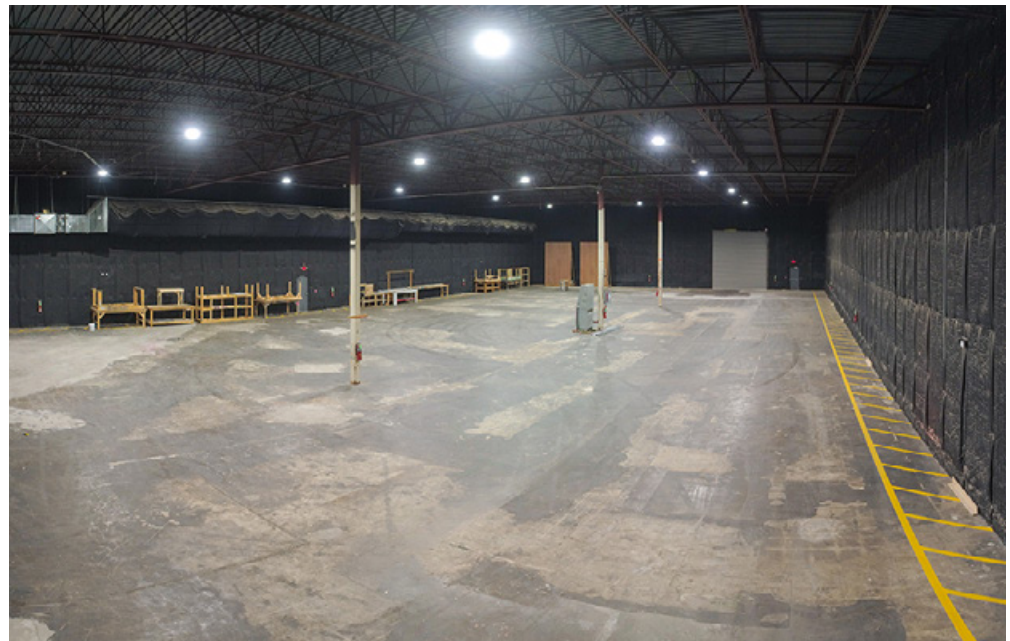
**Big:** 34,705 sq/ft; 186ft x 203ft x 25-21ft  
 ⚡ 3 x 400 amps / 3-phase @ 120/208 V. Total amps: 3600  
 Whisper HVAC

**Easy:** 15,015 sq/ft; 91ft x 165ft x 25-22ft  
 ⚡ 1 x 400A / 3-phase @ 120/208 V. Total amps: 1200  
 No HVAC available

**Gold Room:** 1,536 sq/ft; 32ft x 48ft x 21ft



# IMAGINATION STATION



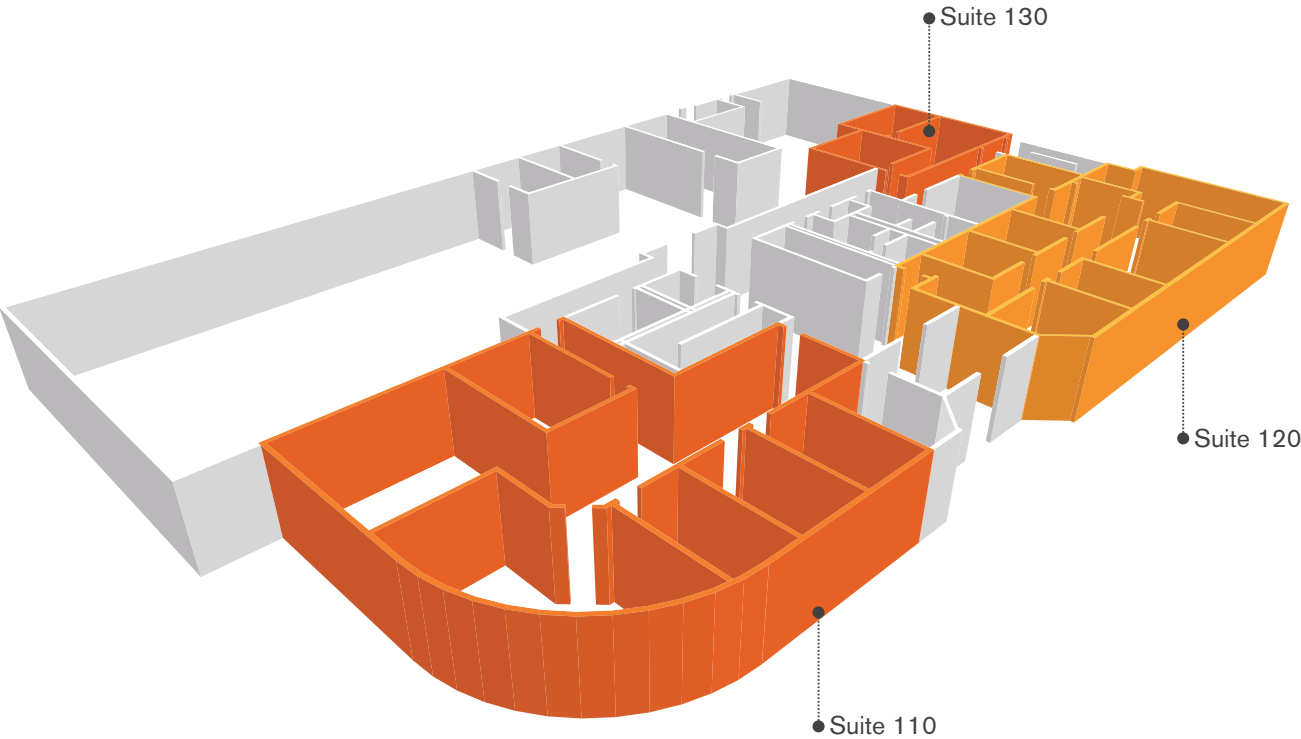




WE LOVE OUR CUSTOMERS



# OFFICES | GROUND FLOOR

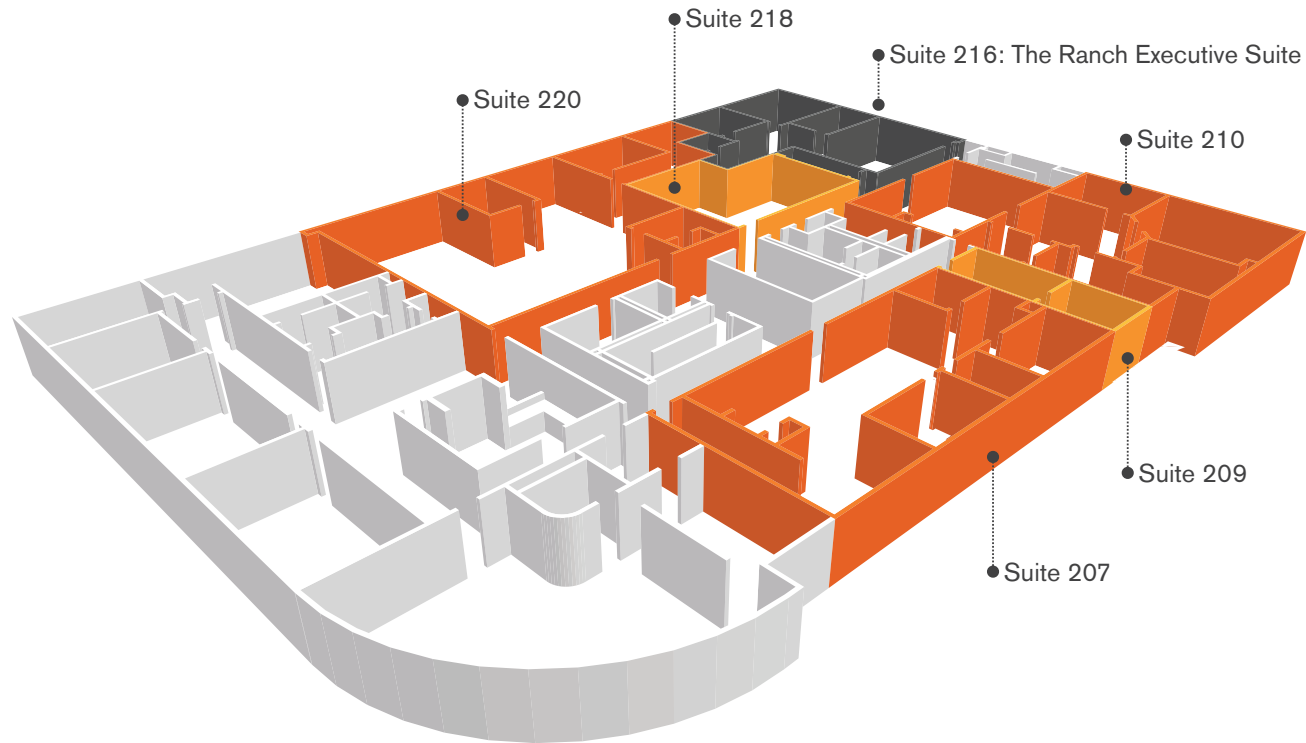


- High speed fiber optic and cable internet:  
1GB upload/download capabilities
- State of the art phone system
- Furnished

Suite 110: 2,427 sq/ft  
Suite 120: 2,154 sq/ft  
Suite 130: 780 sq/ft



## OFFICES | SECOND FLOOR

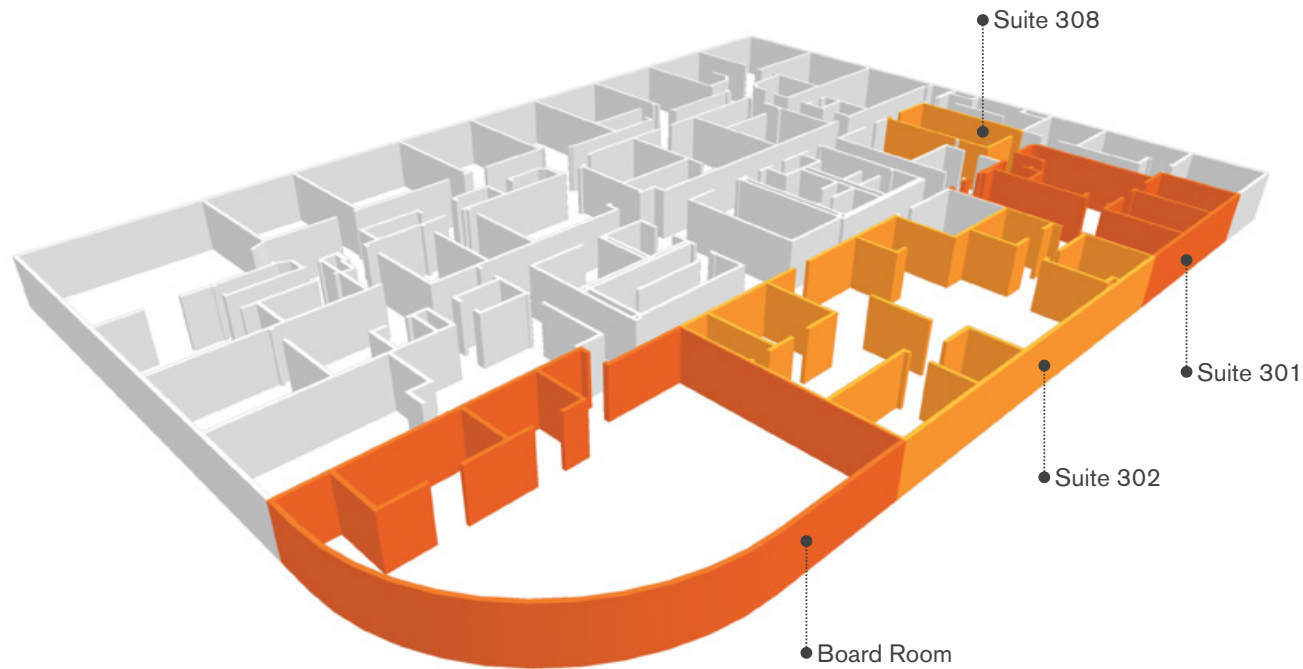


- High speed fiber optic and cable internet:  
1GB upload/download capabilities
- State of the art phone system
- Furnished

The Ranch Executive Suite: 1,612 sq/ft  
Suite 207: 1,688sq/ft  
Suite 209: 292 sq/ft  
Suite 210: 2,253 sq/ft  
Suite 218: 755 sq/ft  
Suite 220: 2,933 sq/ft



## OFFICES | THIRD FLOOR



- High speed fiber optic and cable internet:  
1GB upload/download capabilities
- State of the art phone system
- Furnished

Boardroom: 1,773 sq/ft  
Suite 301: 949 sq/ft  
Suite 302: 1,845 sq/ft  
Suite 308: 253 sq/ft



A black and white close-up portrait of a person wearing a hoodie and glasses. The person's face is the central focus, with their eyes behind the lenses of their glasses. The hoodie's drawstring is visible at the top. The background is dark and out of focus, with some light bokeh on the left side. The text 'WE LOVE CREATING' is overlaid in white, sans-serif, all-caps font across the middle of the face.

WE LOVE CREATING



## 1615 BUILDING | OFF CAMPUS PRODUCTION OFFICES



- 1.8 miles from campus

All office suites:

- High speed fiber optic and cable internet: 1GB upload/download capabilities
- State of the art phone system
- Furnished

1st Floor: 2,000 sq/ft wardrobe

2nd Floor: 8,800 sq/ft offices

3rd Floor: 6,000 sq/ft offices

4th Floor: 8,800 sq/ft offices

# WAREHOUSES

The Ranch Film Studios offers filmmakers access to over 200,000 sq/ft of warehouse storage conveniently located within 1 mile of our campus.

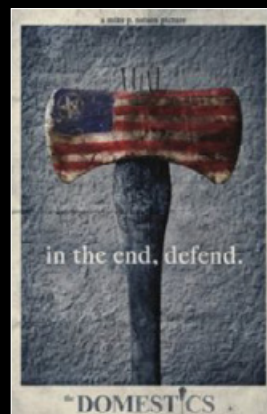
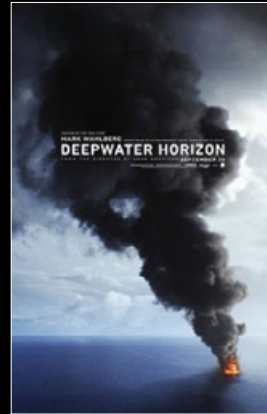




WE LOVE PRODUCERS



# PAST PRODUCTIONS





CONTACT US

Jason Waggenpack  
Head of Possibilities

C: 225-266-9560

O: 504-682-2200

E: [jason@WeAreTheRanch.com](mailto:jason@WeAreTheRanch.com)

The Ranch Film Studios

8301 W. Judge Perez Drive

Suite 216, Chalmette, LA 70043

THE  
RANCH